



Plainsboro Reporter

A Quarterly Township Newsletter

Winter 2025-2026

Plainsboro's Penn Medicine Cancer Center Construction Underway

With the new 1,161-space parking deck now opened, preparation for a 200,000 sf Cancer Center and Imaging Center has begun expanding patient care in Plainsboro. This two-phased project began with the Planning Board's approval of the parking deck in August 2023. Less than a year later construction began. Then the Planning Board approved phase 2, the Cancer Center and Imaging Center, in November 2024. Now that the deck is operational, construction has started on phase 2. It is expected that the project will be completed and the first patients welcomed in May 2028. The Penn Medicine campus off Route 1 and Scudders Mill Road has been a hub of activity since the summer last year.

"This state-of-the-art, patient-centered healing environment is a great asset for the hospital and Plainsboro residents. The entire region will benefit from this expansion", said Mayor Edmund Yates.

The new cancer center building will be LEED

(Leadership in Energy and Environmental Design) certified, a major environmental and energy building accomplishment. The building will be organized with one primary clinical department per floor. Reception and central registration are directly visible and accessible from the entry with drop-off areas on each side of the building. Located centrally on level 1 within the Lobby or "Living Room" is access to each of the individual treatment clinics with waiting room areas on each floor that look out across the campus offering patients access to daylight and views across the bucolic campus setting. To augment the patient experience, patients may visit the Café on level 1, where they will find light refreshments, or the Appearance Center where they may find services to boost their self-image. Because most patients require blood work as an integral part of their treatment, the Lab with its discreet check-in and waiting area is also located on this level directly adjacent to the "Living Room." The building will be connected to the neighboring Education building with direct pedestrian connections on 2 levels.



Mayor Ed Yates (fifth from right) joined CEO of Penn Medicine Princeton Health James Demetriades (fourth from left) and other dignitaries and hospital executives to ceremonially break ground on the new cancer and imaging center at the hospital in October.

Did You Know?

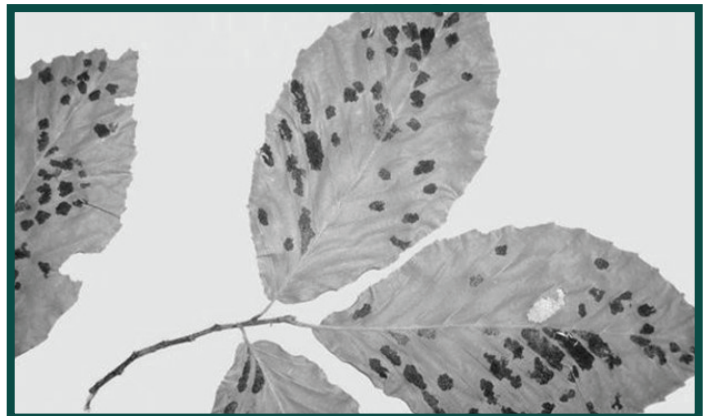
Did you know that home fires occur in the winter more than any other season? Half of all home heating fires occur in December, January and February. In fact, one in every seven home fires - and one in every five home fire-related deaths involves heating equipment. Following are some tips to keep your home safe this winter:

- Keep flammable items at least three feet away from any heat source such as a fireplace, wood stove, radiator or a space heater
- Keep portable generators outside, away from windows, and as far away from your home as possible
- Install smoke alarms and carbon monoxide alarms - and test them at least once per month
- Plug only one heat-producing appliance (such as a space heater) into an electrical outlet at a time
- Have your chimney and vents cleaned and inspected each year by a qualified professional
- Store cooled ashes in a tightly covered metal container and keep the container outside at least 10 feet from your home and any other structures

For more information on winter fire prevention visit www.nfpa.org/winter or contact Plainsboro's Fire Prevention Official, Bill Gorka at wgorka@plainsboronj.com.

Did you know that New Jersey's beech tree population is being impacted by Beech Leaf Disease? American beech trees are a native New Jersey species and can be found Plainsboro. "Unfortunately, a growing threat to these beautiful landscape trees is Beech Leaf Disease (BLD)," said Committeeman Peter Cantu. According to the U.S. Department of Agriculture Forest Service, BLD was first detected in Northeast Ohio in 2012. Caused

by a microscopic nematode, a type of roundworm that feeds on the leaves and buds of beech trees, the disease is raising concern among forest managers, homeowners and nursery growers. Since its arrival in New Jersey, BLD has been detected in eleven counties (not yet including Middlesex) and as of now, no treatments are currently available for affected trees. Common mitigation strategies have been employed to decrease the likelihood of the spread of the disease. These include destroying infected plant material after removal and avoiding transporting plant material (branches, twigs, soil, leaves and seedlings) from affected areas. Pruning techniques have also proven beneficial in decreasing the severity of the disease in infected landscape trees. Early symptoms of BLD include dark stripes or bands between lateral veins of leaves visible upon bud break in the spring. Affected leaves may appear unevenly distributed in the lower canopy and are most apparent when viewed from below when looking upward into the canopy. The New Jersey Department of Environmental Protection encourages residents outside the aforementioned counties with suspected cases of BLD to contact them at foresthealth@dep.nj.gov or by phone at 609-292-2532.



Leaves of a tree infected by Beech Leaf Disease

Making Life Easier Through Online or Electronic Tax Payments

More people are making tax payments online by visiting www.plainsboronj.com and clicking on the Online Payments icon. Choose 'Taxes' and follow the prompts. You can access your tax bill using your name, your address or your block and lot.



Payments can be made three different ways.

For credit card payments, a service charge of 2.95% of the balance paid is charged by the credit card company. To pay by e-check, a vendor service charge of \$1.95

per transaction applies. Finally, you may register with the Tax Collector's office to have your preauthorized bank account debited each quarter for the amount due on your property. This service is provided free of charge and email reminders are sent prior to payments being debited from the preauthorized bank account.

For questions or if you need additional information, please call the Tax Collector's office at (609)799-0909 extension 1408 or 1409 or email taxcollection@plainsboronj.com

Planning for a Community Event? You May Need a Special Event Permit!

Many residents are unaware that the township has a special event ordinance and accompanying permit application process. The ordinance is in place “to ensure the safety and well-being of our residents, event participants and first responders during a planned event that may impact public property, roads or community spaces”, explained Eamon Blanchard, Plainsboro’s Chief of Police and Director of Public Safety.

A Special Event Permit is required for any event where a group may be using a public street, sidewalk, alley, path or other public property – or any largely attended event where activities affect public safety. Such events include but are not limited to block parties, soapbox derbies, marathons, walkathons, bikeathons, jogging groups, hot-air balloon rides, helicopter rides and other types of large gatherings.

“It is important to note that the application is due at least 45 days prior to the date of the scheduled event”, stated Carol Torres, Assistant Administrator and Township Clerk, whose office oversees the administrative process of such permits. In addition, all applicants are required to provide a certificate of insurance and must agree in writing to indemnify and hold harmless the township and its agents and employees for claims arising from the activity covered by the special event permit. Finally, the non-refundable administrative fee is \$100 and is payable at the time the application is submitted.

For instructions, permit application and a copy of the ordinance, visit the Township Clerk page of the township website at <https://www.plainsboronj.com/272/Township-Clerk>. On the lefthand side of the page, click Forms, Licenses and Permit Applications. Questions can be directed to townshipclerk@plainsboronj.com or by phone, call 609-799-0909, extension 2547.

Holiday Wishes Program Brings Joy to Plainsboro Families

The Plainsboro Food Pantry offers several programs throughout the year, including Holiday Wishes. This special program gives families in need the chance to share their holiday wishes by filling out a form. With the help of volunteers, pantry staff create wish tags for each family member. These tags are then placed on “wishing trees” at locations throughout Plainsboro, including: the Recreation Center, Municipal Building, Preserve, Wicoff House, and the library. Residents can select a tag,

purchase the requested gift, wrap it, and return it for our holiday distribution. Local businesses and organizations also participate by requesting tags and encouraging their employees and clients to join in this effort. “Thanks to the generosity of the community, families can celebrate a joyful season”, stated Township Committeeman Nuran Nabi. If you have any questions or want to get involved, contact Erum Ladak, Food Pantry Coordinator at (609)799-0909x 1711 Eladak@plainsboronj.com

Sun Pharma Donates Community Park Sunshades

Mayor Ed Yates (right) and Rick Ascroft, CEO of Sun Pharma North America (left) are pictured under one of two sunshades funded by Sun Pharma at Community Park’s new multi-use recreation area. Sun Pharma, is making Plainsboro its new U.S. headquarters, located on College Road East.

“We want to thank Sun Pharma for its willingness to fund these shade structures and for making Plainsboro their new headquarters”, said Mayor Yates.

Welcome and thank you Sun Pharma!



Back to School: A Look at Plainsboro's Earliest Classrooms

Before Plainsboro had a township of its own, it already had a strong commitment to education. In fact, the need for better schools was one of the driving forces behind the town's push for independence in 1919.

The first known school in Plainsboro was the Mapleton School, a one-room wooden building built around 1840. Located just north of what is now Plainsboro Road, the school had an unusual setup: students sat in a circle facing the walls and windows, with the teacher in the middle. By 1880, records show 46 students were enrolled. When it closed around 1920, the building was moved and repurposed as a farm structure.

Over the years, at least four other one-room schoolhouses served different parts of the village. These simple buildings stood at locations like Dey Road, Grovers Mill, and Schalks Crossing Road, though no known photographs of them remain. One of these buildings was eventually replaced by a two-room schoolhouse built in 1908 on Plainsboro Road. That building, still in use by the school system today, marked a step toward the modern Plainsboro school district.

By 1918, overcrowding had become a real issue. Some classes were moved into the second floor of the nearby Grange Hall, a wooden structure that quickly raised safety concerns. When Cranbury Township (which oversaw education in Plainsboro at the time) refused to build a new school, citing wartime restrictions, Plainsboro residents took action. They petitioned the state to form their own township, and in 1919, they succeeded.

The first official act of the new Township of Plainsboro was to build a proper school. A four-room schoolhouse opened in 1920 behind the Grange Hall, which burned down just eight years later. The new school was named Plainsboro School, and later renamed in 1975 to honor John Van Buren Wicoff, who led the Board of Education from 1919 to 1950 and played a major role in making Plainsboro an independent town with its own school system.

Today, that original school building still stands as the Wicoff School, one of four elementary schools in the West Windsor-Plainsboro district. From one-room wooden buildings to award-winning schools, the story of education in Plainsboro mirrors the growth and determination of the community itself.

Bocce Anyone?

Enthusiasm is growing for the game of bocce in Plainsboro's senior communities. Plainsboro Recreation has been scheduling bocce instruction and bocce games since 2021 on the bocce court at Plainsboro Park. Bocce, often referred to as lawn bowling, is played by two teams which toss balls, approximately the size of a softball, down a long court, aiming to get their own team's four bocce balls closest to the small target ball (known as the pallino or jack) in order to score points for their team.

This year, Plainsboro Park bocce enthusiasts have extended bocce challenges to teams at neighboring bocce courts. The first challenge game was held between the Plainsboro Park bocce team and the Cranbury Brook bocce players at the Cranbury Brook courts in August. With home court advantage, the Cranbury Brook players took a two-game win. A return challenge took place on September 3rd at the Plainsboro bocce court and with home court advantage now on Plainsboro's side, Plainsboro bested their opponents in two games. Yet another match-up was held in mid-September at Cranbury Brook. Clearly the teams are enjoying the challenge and the conviviality of the games!



Members of the Plainsboro and Cranbury Brook bocce team(s) are pictured at the Cranbury Brook bocce court

Winter at Plainsboro Preserve and Bulk Farm

The Preserve is buzzing with winter activities! Our popular *Coffee and Birding program* returns Tuesday mornings beginning January 6 and runs until the end of March. Drop in between 10:00–11:30 am to enjoy coffee, community, and great views of birds at our feeders. We'll also be contributing to Project FeederWatch, helping track bird populations through the season. Later this winter, don't miss our guided *Woodcock Walks*, where you can experience the American Woodcock's unique evening display at the Bulk Farm.

Mark your calendar for *Astronomy Night* on Saturday, February 28, hosted by our Teen Stewardship Committee and the Amateur Astronomers Association of Princeton. Enjoy stargazing, storytelling, crafts, and cozy treats like s'mores and hot chocolate — a magical way to see the Preserve after dark. Dates for the Woodcock Walks will be announced soon, so keep an eye on our program listings and join us for these memorable winter experiences! Visit <https://www.plainsboronj.com/1115/Parks-Recreation> for more information.

Recycling Tips

On August 11th, Plainsboro's Curbside Recycling Program changed after over two decades. Gone are the open 20 and 30-gallon containers and the mandatory task of breaking down cardboard boxes and tying them into piles. Residents must now only be concerned with breaking down their recyclables and placing them into a single covered 95-gallon wheeled container. Overall, the change was a success, however, we can do even better by following these recommendations.

Your recycling container is collected by a single person driving a semi-autonomous truck. This individual does not leave the truck. They use a robotic arm to pick up the container and dump it into the truck. To ensure your container is collected, please do the following: first, place the container at the curb with the silver bar facing forward; second, nothing must be within four feet of the container and third, the lid should be closed to prevent recyclables from falling onto the ground.

Simply placing the recyclables in your container is acceptable, but it's not maximizing the available space.

Most importantly, place only clean acceptable recyclables in the container and never include plastic bags. Also, don't put solid cardboard boxes in the container. Break down the boxes and then place them in the container. Finally, don't pack the container too tight, the recyclables must fall out of the container when turned over by the truck.

"We thank our residents for their patience and resiliency during this transition. Along with the MCIA, we hope these improvements increase our ability to recycle in a more efficient manner", states Deputy Mayor David Bander.

Residents are encouraged to reuse their old recycling containers for other purposes. The Middlesex County Improvement Authority (MCIA) does accept them as recyclable items if they're placed in the new containers. Contact the Department of Public Works for other suggestions at publicworksdept@plainsboronj.com or by phone at 609-799-0099.

Questions regarding the Recycling Program are available on the municipal website, <https://www.plainsboronj.com/235/Household-Recycling> and the Recycle Coach app.

Second Annual Family Campout a Success

Families pitched their tents and spent the night under the stars at the Second Annual Family Campout, complete with hiking, s'mores, fireside cooking, and a special stargazing session.

Be sure to join us next September for another unforgettable campout experience!

Future dates will be announced on the Parks and Recreation page of the township website at <https://www.plainsboronj.com/1115/Parks-Recreation>



Plainsboro's Emergency Preparedness Partnerships

Plainsboro Township takes emergency preparedness seriously. Our community's safety is a team effort, combining the expertise and dedication of our first responders with the active participation of our residents. The Plainsboro Township Office of Emergency Management (POEM) plays a central role in this effort, coordinating a comprehensive response from the Plainsboro Fire Division, Plainsboro Police Department, and Plainsboro Rescue Squad in the event of any disaster, whether natural or man-made. Emergency preparedness is also a partnership. While our first responders are highly trained and equipped, every resident has a part to play in ensuring community safety. POEM provides a wealth of resources to help you prepare, including guides on how to build a disaster kit and create a family emergency plan.

Our emergency services are constantly working to maintain and improve their readiness. The Plainsboro Fire Department, for example, has been working to bolster its ranks and upgrade facilities to meet the needs of our growing community. The Plainsboro Rescue Squad, a volunteer organization, provides crucial medical services,

particularly during nights and weekends when paid staff are not available. Their dedication is a testament to our community's spirit of service. You can also get involved by joining the Community Emergency Response Team (CERT), a volunteer group that assists first responders during major events.

"The well-being of our community depends on this collective commitment to readiness. By staying informed, preparing your household, and supporting our first responders, you can help Plainsboro remain a safe and resilient place to live", stated Committeeman and Public Safety Liaison Neil J. Lewis.

One of the most effective ways to stay informed is by registering for the township's public safety notifications. This service provides timely alerts about weather-related incidents, road closures, and other critical information that can help you and your family stay safe. To sign up, visit <https://www.everbridge.com/products/nixle/> or follow the link for Nixle on the Public Safety page of the township website at <https://www.plainsboronj.com/195/Police-Department>.

Driving Safely in Winter Weather

Winter weather creates unique challenges for motorists. Knowing how to handle these challenging conditions can assure that you arrive at your destination safely. If you must drive, try not to go out on the roads until the snowplows and sanding trucks have had a chance to do their work. Allow extra time to reach your destination. Be sure your car is prepared with all season or snow tires, working windshield wipers with windshield cleaning fluid, and enough gas to complete your trip.

Committeeman and Public Safety Liaison Neil J. Lewis notes, "The key to safe winter driving is to leave a few minutes early for your destination, to follow safe winter driving practices and learn what to do when things don't

go as planned."

When driving on an icy road, slow down and leave plenty of room to stop. When braking, do so gently to avoid skidding. If your rear wheels skid, take your foot off of the accelerator and steer in the direction you want the front wheels to go.

Turn your lights on to increase your visibility to other motorists. Never use cruise control on icy roads and be especially careful on bridges, overpasses and infrequently traveled roads which will be the first to freeze. Do not pass snow plows and sanding trucks. For more driving and vehicle safety tips visit <https://www.nhtsa.gov/>

New Officers Sworn In

In September, two officers were sworn in as the department's newest team members. Jason Hanley returned as a Class III officer at the high school. Hanley retired from the department last year after 25 years of dedicated service. Katelyn Disler joined the patrol division. Disler has two years of experience with Princeton University's Department of Public Safety.

Pictured right are (left to right) Committeeman Neil J. Lewis, Class III Officer Jason Hanley, Chief Eamon Blanchard, Officer Katelyn Disler and Mayor Ed Yates



At Your Service...

Township Clerk's Office: 799-0909, extension 2547

Elections

Visit the County of Middlesex Board of Elections for information and resources on elections, voting, forms, poll worker opportunities and frequently asked questions.

Pet Licenses

NJ State Law mandates that all dogs six months and older must be licensed annually. Township Code Chapter 53 mandates that all cats seven months or older must also be licensed annually by the Township. Licenses are due for renewal by January 31st with penalty charges beginning on February 1st. Applications for dogs and cats are available from the Township Clerk's Office and the township website. Failure to license pets is in violation of Plainsboro Township's Ordinance 59-1 and can result in a summons. **According to state regulation N.J.A.C. 8:23A, when licensing, the rabies vaccination immunity must extend through at least ten (10) months of the 12-month licensing period. Licenses cannot be issued if the rabies vaccination expires before November 1st of each year. If for any medical reason the animal cannot be vaccinated in the required time, form VPH-28 must be completed by the veterinarian and submitted with the renewal form.

| Spayed/Neutered | | Non-Spayed /Non-Neutered |
|-----------------|---------|-----------------------------|
| January | \$13.20 | \$16.20 |
| February | \$18.20 | \$21.20 |
| March | \$23.20 | \$26.20 |
| April | \$28.20 | \$31.20 |
| May | \$33.20 | \$36.20 |
| June | \$38.20 | \$41.20 |
| July | \$43.20 | \$46.20 |
| August | \$48.20 | \$51.20 |
| September | \$53.20 | \$56.20 |
| October | \$58.20 | \$61.20 |
| November | \$63.20 | \$66.20 |
| December | \$68.20 | \$71.20 |

If you missed the Township's Rabies Clinic in November please contact the Middlesex County Public Health Department at (732) 745-3100 for the listing of the county scheduled clinics held in the surrounding municipalities.

Vital Records

The local registrar is responsible for maintaining vital records of births, marriages/civil unions, domestic partnerships and deaths that occurred in Plainsboro Township. The municipality that holds the original record is the only registrar, besides the State Registrar, that can issue a certified copy. A Certified Copy of a vital record is issued to those individuals

who have a direct link to the individual(s) named on the vital record, as identified in the Governor's Executive Order 18, and provided that the requestor is able to identify the vital record and can provide proof of identity and relationship.

For more information regarding requirements and fees, call the office or visit the township website.

Public Works Department 609-799-0099

Conservation and Recycling Center

Hours of Operation

Through December 4th, the conservation center located off Grovers Mill Road (between Orchard Lane and Derry Meeting Drive) will be open Mondays and Thursdays from 5:30pm to 7:30pm and on Saturdays from 10:00am to 5:00pm. From December 5, 2025 through March 31, 2026, the center will be open only on Saturdays from 10:00am to 2:00pm.

Curbside Recycling

Scheduled pickup dates are December 1 and 15 and 29; January 12 and 26; February 9 and 23.

Christmas Tree Pickup

Christmas trees will be collected curbside throughout the township each Monday in January. Apartment and condo residents must contact their management office for disposal instructions. Trees may also be taken to the Conservation Center for drop-off on Saturdays from 10:00am to 2:00pm. For safety reasons, trees containing ornaments, wire, metal or nails **will not** be accepted.

Next Bulk Waste Day – April 4, 2026 from 8:00am-5:00pm at the Recycling & Conservation Center

Middlesex County Programs

Paint and household hazardous waste disposal services, and paper shredding events are provided by the county. For more information, please visit <https://www.plainsboronj.com/225/Public-Works>

or contact Middlesex County Solid Waste at 732-745-4170.



Please, recycle your balloons at one of these locations:

Department of Public Works
20 Woodland Drive, Cranbury, NJ 08512

Plainsboro Preserve
80 Scotts Corner Road, Cranbury, NJ 08512

Recreation Center
641 Plainsboro Road, Plainsboro, NJ 08536

More information at:
<https://www.plainsboronj.com/1189/Balloon-Recycling>



Presorted Standard
US Postage
paid
Princeton, NJ
Permit No. 240

PLAINSBORO

Township of Plainsboro
641 Plainsboro Road
Plainsboro, New Jersey 08536

TOWNSHIP COMMITTEE

Edmund Yates, Mayor
David Bander, Deputy Mayor
Peter A. Cantu
Neil J. Lewis
Nuran Nabi

NEWSLETTER EDITOR

Teresa Carson

TOWNSHIP ADMINISTRATOR

Anthony Cancro

ECRWSS
POSTAL CUSTOMER
PLAINSBORO, NJ 08536

Township Directory and Information

Plainsboro Township Municipal Offices

Location: 641 Plainsboro Road
Phone: General 609-799-0909
Court 609-799-0863
Website: www.plainsboronj.com
Hours of Operation:
Monday-Friday 8:30am-4:30pm

Plainsboro Recreation and Community Services

Location: 641 Plainsboro Road
Phone: General 609-799-0909, press 6
Email recdept@plainsboronj.com

Plainsboro Public Works Department

Location: Scotts Corner Road at 20 Woodland Drive
Phone: 609-799-0099

Recycling Center, Bulk Waste
See Page 7 for details or visit website

Plainsboro Police Department

Location: 641 Plainsboro Road
Phone: Non-Emergency 609-799-2333
Emergencies - 9 1 1
Website: www.plainsboropolice.com

Plainsboro Public Library

Location: 9 Van Doren Street
Phone: 609-275-2897
Website: www.plainsborolibrary.org

Useful Numbers

School District Information
609-716-5000

Report street light out to
PSE&G 1-800-436-7734

Report potholes to
Public Works 609-799-0099

New Jersey American Water
1-800-272-1325

Call before you dig
811

Township Meetings

All meetings are held at in the Municipal
Building at 641 Plainsboro Road, unless
otherwise noted.

Township Committee

Regular Mtg. 2nd Wednesday, 7:00pm
Agenda Mtg. 4th Wednesday, 7:00pm

For more information on the following
meetings, call 609-799-0909 x 1502

Planning Board

3rd Monday, 7:00pm

Zoning Board

1st Wednesday at 7:00pm

Development Review Committee

3rd Tuesday, 7:00pm

Environmental Advisory Committee

4th Monday, 7:00pm